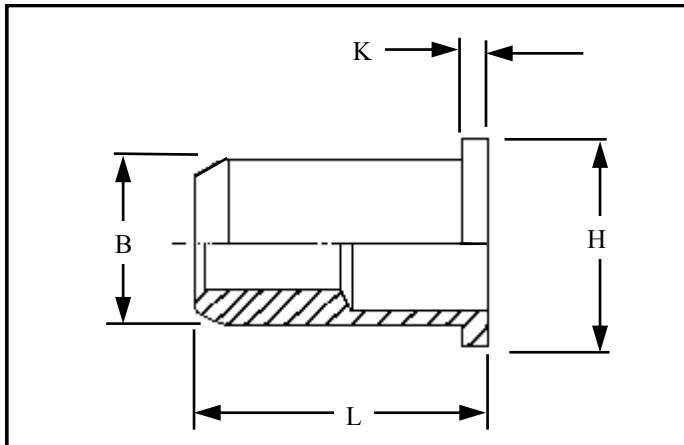




# RIVETNUT TECHNOLOGY SYSTEMS LIMITED

## RFOS IN MILD STEEL



Round flat head open ended Rivetnuts for material up to 11.00 mm thick

All dimensions in mm  
Material :- Mild Steel  
Finish :- Zinc Cr3

**R.T.S. SALES LINE**  
**01296 330331**

# TECHNICAL DATA SHEET

THREAD SIZE	GRIP RANGE	HOLE SIZE -0.0 +0.10	BODY DIA "B"	HEAD DIA "H" ± 0.10	LENGTH "L"	"K"	PART NUMBER
M3	0.50 to 1.10	5.10	5.00	7.00	7.90	0.80	RFOS-03011
	0.50 to 1.70				8.50		RFOS-03017
	1.00 to 2.30				9.10		RFOS-03023
	1.80 to 3.00				9.70		RFOS-03030
M4	0.50 to 1.30	6.10	6.00	8.00	10.10	0.80	RFOS-04013
	0.50 to 2.10				10.90		RFOS-04021
	0.50 to 3.00				11.90		RFOS-04030
	1.30 to 3.70				12.50		RFOS-04037
M5	0.50 to 1.50	7.10	7.00	9.00	11.70	1.00	RFOS-05015
	0.50 to 2.50				12.70		RFOS-05025
	0.50 to 3.50				13.70		RFOS-05035
	1.50 to 4.50				14.70		RFOS-05045
M6	0.50 to 1.50	9.10	9.00	11.00	14.40	1.20	RFOS-06015
	0.50 to 2.50				15.40		RFOS-06025
	1.00 to 3.50				16.40		RFOS-06035
	2.00 to 4.50				17.40		RFOS-06045
	3.00 to 5.50				18.40		RFOS-06055
M8	0.50 to 1.80	11.10	11.00	14.00	16.00	1.50	RFOS-08018
	0.50 to 3.00				17.30		RFOS-08030
	1.20 to 4.20				18.40		RFOS-08042
	2.00 to 5.40				19.50		RFOS-08054
	3.50 to 6.50				20.70		<a href="#">RFOS-08065</a>
M10	0.50 to 2.50	13.10	13.00	16.00	21.30	1.50	<a href="#">RFOS-10025</a>
	0.50 to 4.00				22.80		<a href="#">RFOS-10040</a>
	2.00 to 5.50				24.50		RFOS-10055
	4.00 to 7.00				25.80		<a href="#">RFOS-10070</a>
M12	0.50 to 4.20	16.10	16.00	20.00	25.90	1.70	RFOS-12042
	2.00 to 6.00				27.70		<a href="#">RFOS-12060</a>
	3.50 to 7.60				29.30		RFOS-12076
	6.00 to 9.20				30.90		<a href="#">RFOS-12092</a>
	9.20 to 11.00				33.30		<a href="#">RFOS-12110</a>
M16	0.50 to 5.80	21.10	21.00	26.00	32.90	2.50	<a href="#">RFOS-16058</a>
	2.00 to 8.20				35.30		<a href="#">RFOS-16082</a>
	6.00 to 11.00				38.10		RFOS-16110

For additional information and technical support please contact R.T.S. technical sales department . R.T.S. reserve the right to change specifications at any time . Information given is for guidance only and should not be used for specific design criteria without reference to our application engineers.