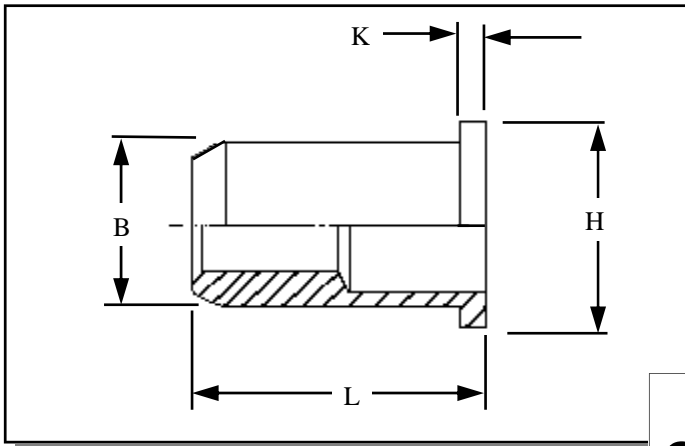




# RIVETNUT TECHNOLOGY SYSTEMS LIMITED

## RFOI-CD316 IN STAINLESS STEEL



Round flat head open ended Rivetnuts for material up to 7.00 mm thick

All dimensions in mm  
Material :- 316 Stainless Steel  
Contains >2% Molybden  
Finish :- Self colour

**R.T.S. SALES LINE**  
**01296 330331**

**TECHNICAL DATA SHEET**

THREAD SIZE	GRIP RANGE	HOLE SIZE -0.0 +0.10	BODY DIA "B"	HEAD DIA "H" ± 0.10	LENGTH "L"	"K"	PART NUMBER
M4	0.50 to 2.00	6.10	6.00	9.00	12.00	1.00	RFOI-04020-CD316
M5	0.50 to 3.00	7.10	7.00	10.00	12.50	1.00	RFOI-05030-CD316
M6	0.50 to 3.00 3.00 to 5.00 5.00 to 7.00	9.10	9.00	12.00	16.00 18.00 20.00	1.50	RFOI-06030-CD316 RFOI-06050-CD316 RFOI-06070-CD316
M8	0.50 to 3.00 3.00 to 5.50 4.50 to 7.00	11.10	11.00	15.00	17.50	1.50	RFOI-08030-CD316 RFOI-08055-CD316 RFOI-08070-CD316
M10	0.80 to 3.50	13.10	13.00	17.00	23.00	1.50	RFOI-10035-CD316

For additional information and technical support please contact R.T.S. technical sales department . R.T.S. reserve the right to change specifications at any time . Information given is for guidance only and should not be used for specific design criteria without reference to our application engineers.