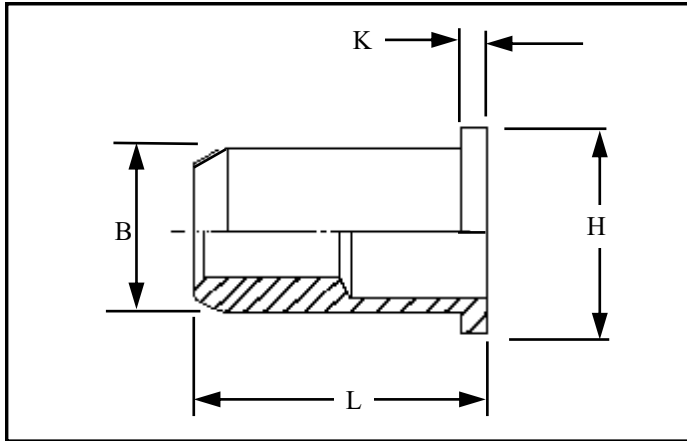




RIVETNUT TECHNOLOGY SYSTEMS LIMITED

RFOI IN STAINLESS STEEL



Round flat head open ended Rivetnuts for material up to 11.00 mm thick

All dimensions in mm
Material :- Stainless Steel (AISI 303)
Finish :- self colour

R.T.S. SALES LINE
01296 330331

TECHNICAL DATA SHEET

THREAD SIZE	GRIP RANGE	HOLE SIZE -0.0 +0.10	BODY DIA "B"	HEAD DIA "H" ± 0.10	LENGTH "L"	"K"	PART NUMBER
M3	0.50 to 1.10 0.50 to 1.70 1.00 to 2.30 2.30 to 3.00	5.10	5.00	7.00	7.40 8.00 8.60 9.20	0.80	RFOI-03011 RFOI-03017 RFOI-03023 RFOI-03030
M4	0.50 to 1.30 1.00 to 2.10 1.80 to 3.00 2.50 to 3.70	6.10	6.00	8.00	9.10 9.80 10.70 11.50	0.80	RFOI-04013 RFOI-04021 RFOI-04030 RFOI-04037
M5	0.50 to 1.50 0.50 to 2.50 1.50 to 3.50 3.00 to 4.50	7.10	7.00	9.00	10.50 11.50 12.20 13.50	1.00	RFOI-05015 RFOI-05025 RFOI-05035 RFOI-05045
M6	0.50 to 1.50 0.50 to 2.50 1.50 to 3.50 2.50 to 4.50 3.50 to 5.50 6.50 to 8.50	9.10	9.00	11.00	13.00 14.00 15.00 16.10 17.10 20.60	1.20	RFOI-06015 RFOI-06025 RFOI-06035 RFOI-06045 RFOI-06055 RFOI-06085
M8	0.50 to 1.80 1.00 to 3.00 2.20 to 4.20 3.00 to 5.00 4.50 to 6.50	11.10	11.00	14.00	15.70 16.90 18.10 18.90 20.40	1.50	RFOI-08018 RFOI-08030 RFOI-08042 RFOI-08050 RFOI-08065
M10	0.50 to 2.50 1.00 to 4.00 2.50 to 5.50 4.50 to 7.00 6.50 to 8.00	13.10	13.00	16.00	19.80 21.30 22.80 24.30 25.80	1.50	RFOI-10025 RFOI-10040 RFOI-10055 RFOI-10070 RFOI-10080
M12	0.50 to 4.20 2.50 to 6.00 4.00 to 7.60 7.00 to 9.20	16.10	16.00	20.00	23.30 26.00 28.50 30.10	1.70	RFOI-12042 RFOI-12060 RFOI-12076 RFOI-12092
M16	0.50 to 3.20 0.50 to 5.70 2.00 to 8.20 6.00 to 11.00	21.10	21.00	26.00	30.30 32.80 35.30 38.10	2.50	RFOI-16032 RFOI-16057 RFOI-16082 RFOI-16110

For additional information and technical support please contact R.T.S. technical sales department . R.T.S. reserve the right to change specifications at any time . Information given is for guidance only and should not be used for specific design criteria without reference to our application engineers.