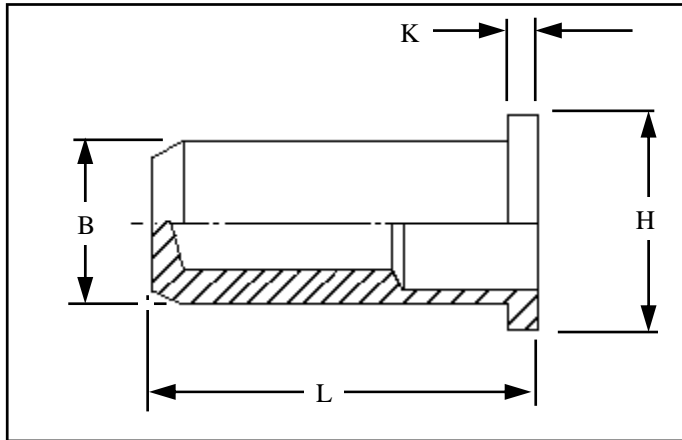




RIVETNUT TECHNOLOGY SYSTEMS LIMITED

RFCI IN STAINLESS STEEL



Round flat head closed ended Rivetnuts for material up to 11.00 mm thick

All dimensions in mm
Material :- Stainless Steel (AISI 303)
Finish :- Self colour

R.T.S. SALES LINE
01296 330331

TECHNICAL DATA SHEET

THREAD SIZE	GRIP RANGE	HOLE SIZE -0.0 +0.10	BODY DIA "B"	HEAD DIA "H" ± 0.10	LENGTH "L"	"K"	PART NUMBER
M3	0.50 to 1.10 0.50 to 1.70 1.00 to 2.30 2.30 to 3.00	5.10	5.00	7.00	11.40 12.00 12.60 13.20	0.80	RFCI-03011 RFCI-03017 RFCI-03023 RFCI-03030
M4	0.50 to 1.30 0.80 to 2.10 1.80 to 3.00 2.50 to 3.70	6.10	6.00	8.00	14.80 15.60 16.40 17.20	0.80	RFCI-04013 RFCI-04021 RFCI-04030 RFCI-04037
M5	0.50 to 1.50 1.50 to 2.50 2.50 to 3.50 3.50 to 4.50 6.00 to 7.00	7.10	7.00	9.00	17.00 18.00 19.00 20.00 23.20	1.00	RFCI-05015 RFCI-05025 RFCI-05035 RFCI-05045 RFCI-05070
M6	0.50 to 1.50 0.50 to 2.50 1.00 to 3.50 2.00 to 4.50 3.00 to 5.50	9.10	9.00	11.00	21.00 22.00 23.00 24.00 25.00	1.20	RFCI-06015 RFCI-06025 RFCI-06035 RFCI-06045 RFCI-06055
M8	0.50 to 1.80 0.50 to 3.00 1.80 to 4.20 2.50 to 5.00 4.50 to 6.50	11.10	11.00	14.00	24.10 25.30 26.50 27.70 28.90	1.50	RFCI-08018 RFCI-08030 RFCI-08042 RFCI-08050 RFCI-08065
M10	0.50 to 2.50 1.00 to 4.00 2.50 to 5.50 4.50 to 7.00	13.10	13.00	16.00	31.50 33.30 34.30 35.80	1.50	RFCI-10025 RFCI-10040 RFCI-10055 RFCI-10070
M12	0.50 to 4.20 2.50 to 6.00 4.00 to 7.60 7.00 to 9.20	16.10	16.00	20.00	34.20 36.00 37.80 39.60	1.70	RFCI-12042 RFCI-12060 RFCI-12076 RFCI-12092
M16	0.50 to 3.20 1.00 to 5.70 3.50 to 8.30 7.00 to 11.00	21.10	21.00	26.00	44.30 46.80 49.30 52.10	2.50	RFCI-16032 RFCI-16057 RFCI-16083 RFCI-16110

For additional information and technical support please contact R.T.S. technical sales department . R.T.S. reserve the right to change specifications at any time . Information given is for guidance only and should not be used for specific design criteria without reference to our application engineers.