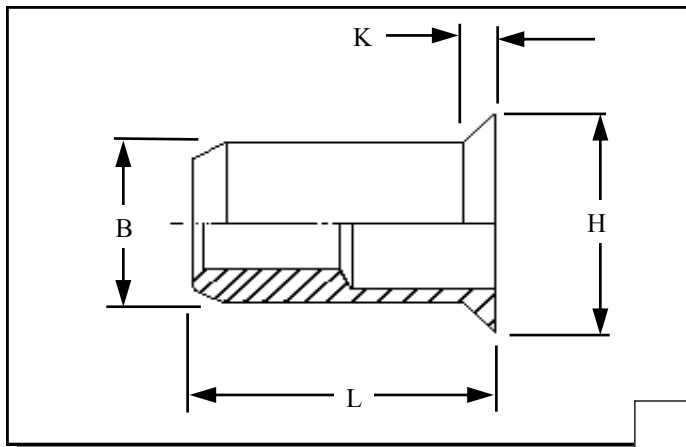




# RIVETNUT TECHNOLOGY SYSTEMS LIMITED

## RCOS IN MILD STEEL



Round Countersunk head open ended Rivetnuts for material up to 10.70 mm thick

All dimensions in mm  
Material :- Mild Steel  
Finish :- Zinc Plated Cr3 RoHS compliant

**R.T.S. SALES LINE**  
**01296 330331**

**TECHNICAL DATA SHEET**

THREAD SIZE	GRIP RANGE	HOLE SIZE -0.0 +0.10	BODY DIA "B"	HEAD DIA "H" ± 0.10	LENGTH "L"	"K"	PART NUMBER
M3	1.00 to 1.70 1.10 to 2.30 2.00 to 3.00	5.10	5.00	6.80	7.80 8.40 9.00	1.00	RCOS-03017 RCOS-03023 RCOS-03030
M4	1.00 to 2.10 1.30 to 2.90 2.50 to 3.70	6.10	6.00	7.80	10.20 11.00 11.80	1.00	RCOS-04021 RCOS-04029 RCOS-04037
M5	1.00 to 2.50 1.50 to 3.50 3.00 to 4.50	7.10	7.00	8.80	11.80 12.80 13.80	1.00	RCOS-05025 RCOS-05035 RCOS-05045
M6	1.00 to 2.50 1.50 to 3.50 2.50 to 4.50 4.00 to 5.50	9.10	9.00	10.80	14.30 15.30 16.30 17.30	1.00	RCOS-06025 RCOS-06035 RCOS-06045 RCOS-06055
M8	1.50 to 3.00 1.80 to 4.20 3.00 to 5.40 5.00 to 6.60	11.10	11.00	13.80	15.70 16.90 18.10 19.30	1.50	RCOS-08030 RCOS-08042 RCOS-08054 RCOS-08066
M10	1.50 to 3.70 2.00 to 5.20 5.00 to 6.80	13.10	13.00	15.80	21.40 22.90 24.40	1.50	RCOS-10037 RCOS-10052 RCOS-10068
M12	2.00 to 4.20 2.00 to 5.90 4.00 to 7.60	16.10	16.00	19.80	24.10 25.90 27.70	2.00	RCOS-12042 RCOS-12059 RCOS-12076
M16	3.00 to 5.70 5.80 to 8.20 8.30 to 10.70	21.10	21.00	25.80	30.40 32.90 35.70	2.50	RCOS-16057 RCOS-16082 RCOS-16107

For additional information and technical support please contact R.T.S. technical sales department . R.T.S. reserve the right to change specifications at any time . Information given is for guidance only and should not be used for specific design criteria without reference to our application engineers.