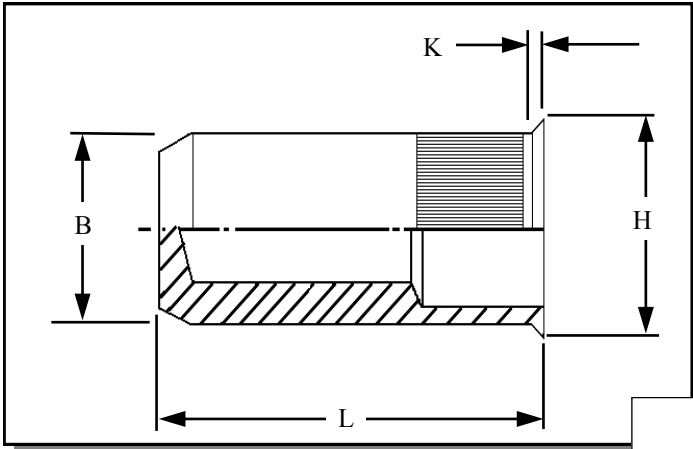




RIVETNUT TECHNOLOGY SYSTEMS LIMITED

KLCS IN MILD STEEL



Knurled Round low profile head closed ended Rivetnuts for material up to 7.60 mm thick

All dimensions in mm
Material :- Mild Steel
Finish :- Zinc Plated Cr3 RoHS compliant

R.T.S. SALES LINE
01296 330331

TECHNICAL DATA SHEET

THREAD SIZE	GRIP RANGE	HOLE SIZE -0.0 +0.10	BODY DIA "B"	HEAD DIA "H" ± 0.10	LENGTH "L"	"K"	PART NUMBER
M3	0.50 to 1.10	5.10	5.00	5.80	11.70	0.30	KLCS-03011
	1.00 to 2.30				12.90		KLCS-03023
M4	0.50 to 1.30	6.10	6.00	6.80	15.10	0.30	KLCS-04013
	1.00 to 3.00				19.30		KLCS-04030
M5	0.50 to 1.50	7.10	7.00	8.00	16.80	0.40	KLCS-05015
	1.00 to 3.50				19.30		KLCS-05035
M6	0.50 to 1.50	9.10	9.00	10.00	21.30	0.40	KLCS-06015
	1.00 to 3.50				23.30		KLCS-06035
1/4 28 UNF	1.00 to 3.50	9.10	9.00	10.00	23.30	0.40	KLCS-06035-1428
M8	0.50 to 1.80	11.10	11.00	12.00	24.00	0.40	KLCS-08018
	1.50 to 5.00				27.80		KLCS-08050
M10	0.50 to 3.20	13.10	13.00	14.40	32.00	0.50	KLCS-10032
	1.50 to 5.50				34.40		KLCS-10055
M12	2.00 to 7.60	16.10	16.00	17.40	39.70	0.50	KLCS-12076

For additional information and technical support please contact R.T.S. technical sales department . R.T.S. reserve the right to change specifications at any time . Information given is for guidance only and should not be used for specific design criteria without reference to our application engineers.