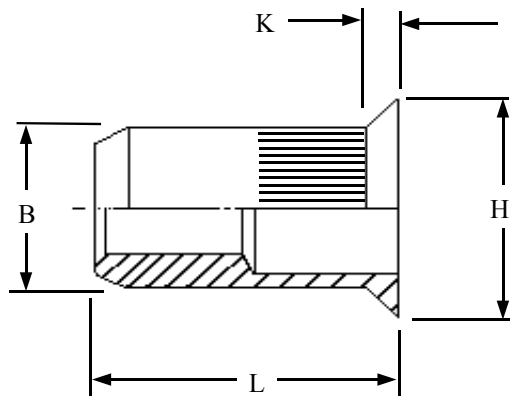




RIVETNUT TECHNOLOGY SYSTEMS LIMITED

KCOI IN STAINLESS STEEL



Knurled Countersunk head
open ended Rivetnuts for
material up to
6.80 mm thick

All dimensions in mm
Material :- Stainless Steel (AISI 303)
Finish :- Self colour

R.T.S. SALES LINE

01296 330331

TECHNICAL DATA SHEET

THREAD SIZE	GRIP RANGE	HOLE SIZE -0.0 +0.10	BODY DIA "B"	HEAD DIA "H" ± 0.10	LENGTH "L"	"K"	PART NUMBER
M3	1.00 to 1.70 1.10 to 2.30 1.80 to 3.00	5.10	5.00	6.80	7.30 7.90 8.50	1.00	KCOI-03017 KCOI-03023 KCOI-03030
M4	1.00 to 2.10 1.30 to 2.90 2.00 to 3.70	6.10	6.00	7.80	9.20 10.00 10.80	1.00	KCOI-04021 KCOI-04029 KCOI-04037
M5	1.00 to 2.50 1.50 to 3.50 2.50 to 4.50	7.10	7.00	8.80	10.60 11.60 12.60	1.00	KCOI-05025 KCOI-05035 KCOI-05045
M6	1.00 to 2.50 1.50 to 3.50 2.50 to 4.50 3.50 to 5.50	9.10	9.00	10.80	12.90 13.90 14.90 15.90	1.00	KCOI-06025 KCOI-06035 KCOI-06045 KCOI-06055
M8	1.50 to 3.00 1.80 to 4.20 3.00 to 5.40 4.00 to 6.60	11.10	11.00	13.80	15.30 16.50 17.70 18.60	1.50	KCOI-08030 KCOI-08042 KCOI-08054 KCOI-08066
M10	1.50 to 3.70 2.00 to 5.20 4.00 to 6.80	13.10	13.00	15.80	19.90 21.40 22.90	1.50	KCOI-10037 KCOI-10052 KCOI-10068
M12	2.00 to 4.20 2.00 to 6.00	16.10	16.00	19.80	22.50 24.20	2.00	KCOI-12042 KCOI-12060

For additional information and technical support please contact R.T.S. technical sales department . R.T.S. reserve the right to change specifications at any time . Information given is for guidance only and should not be used for specific design criteria without reference to our application engineers.